

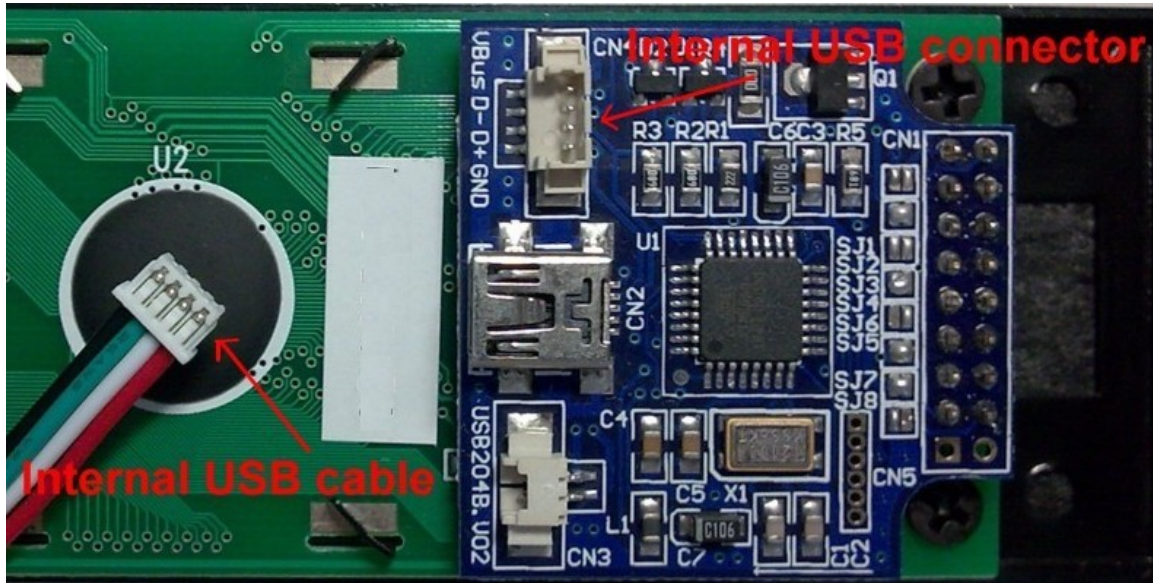
Installation Guide (Vista 32 bit) - U204MB-A1

Driver and Hardware Installation for Vista 32bit

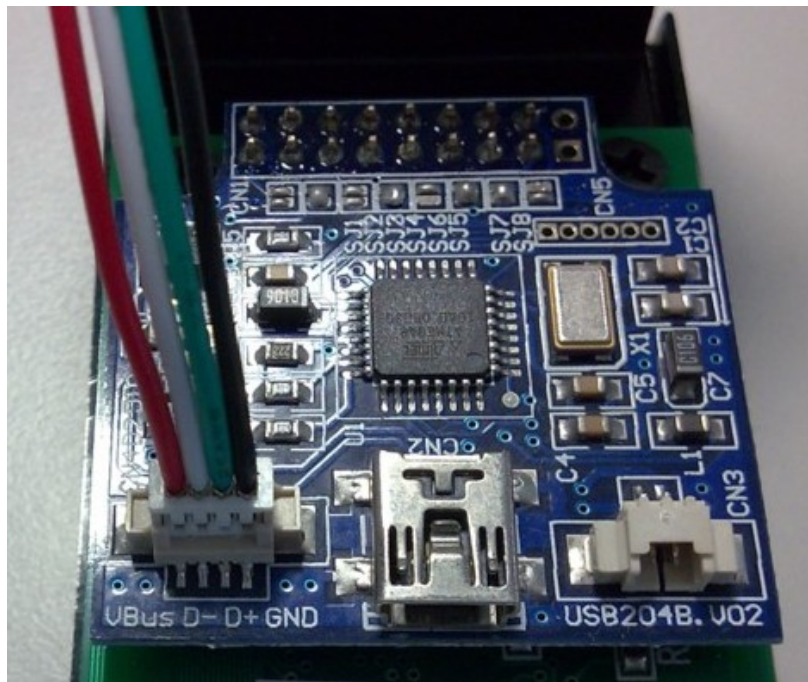
Procedure

1. If you are using Vista 64 bits, please do "Certificate making for Vista 64 bits first".
2. Unzip the LCD2USB.zip file (If CD-ROM is not provided).
3. Copy the folder "lcd2usbdriver" to any drives and folders you like.
4. Prepare the USB connection to **U204MB-A1**.

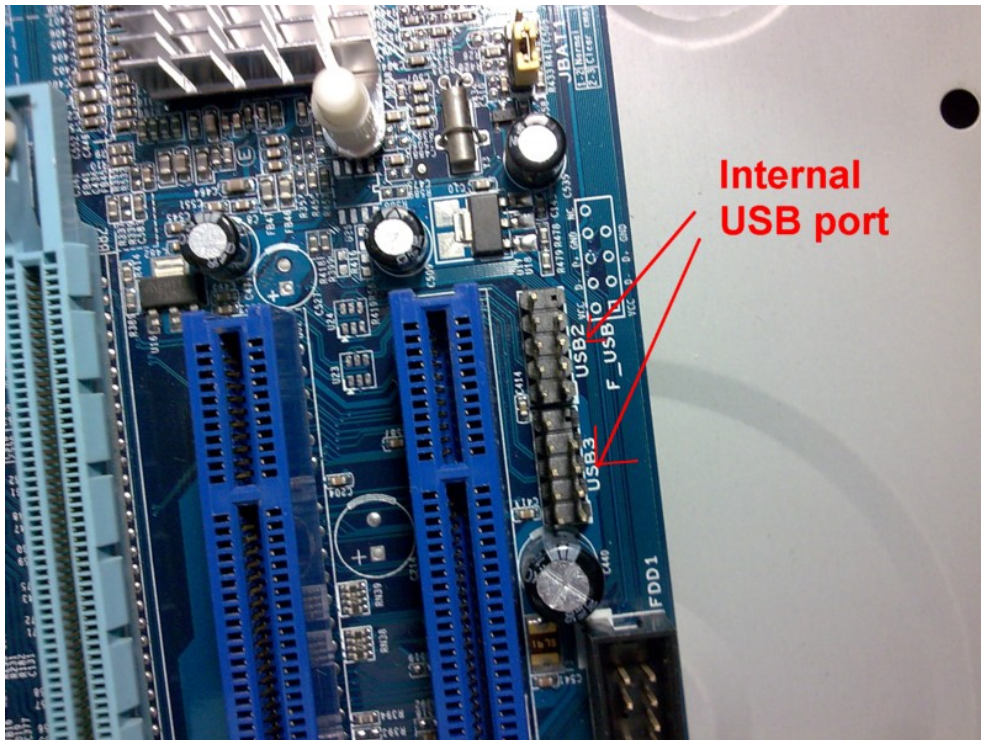
You can use internal USB connection (CN4) or external USB connection (CN2)



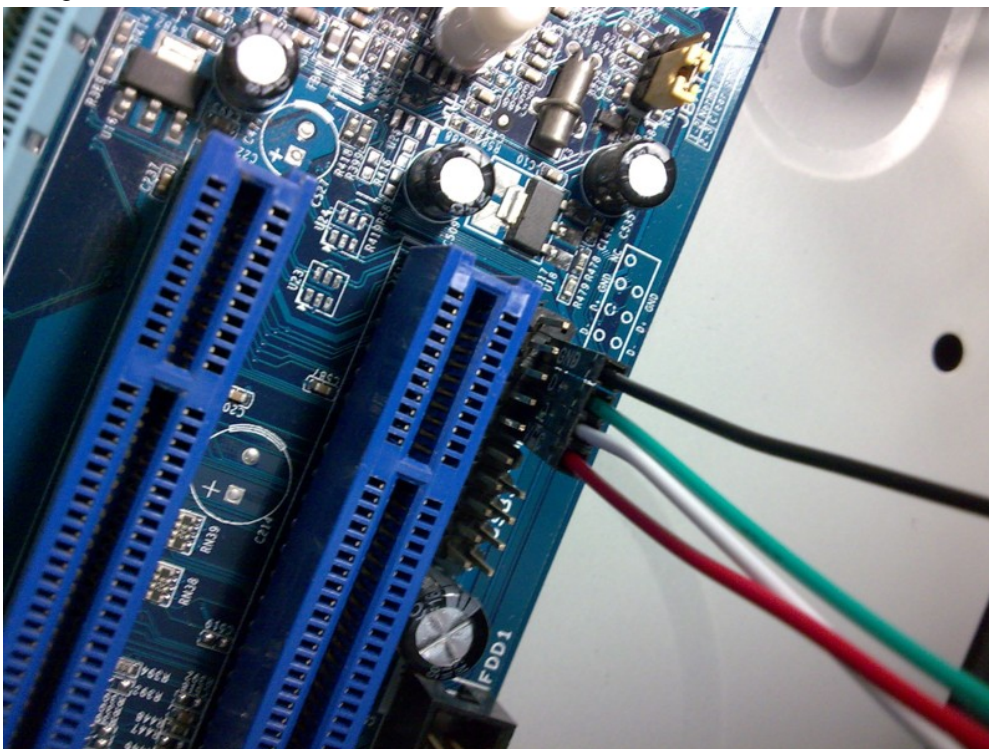
For **internal USB connection**, plug in the internal USB cable to CN4 (Red-VBus/VCC, White-D-, Green-D+, Black-GND)



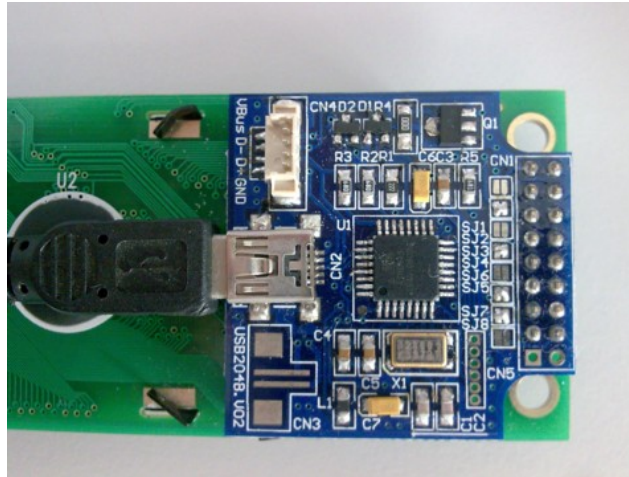
For **internal connection**, power off your PC first and then find your internal USB port in your motherboard.



For **internal USB connection**, plug the internal USB cable to your board. Please reference the pins configuration of mother board user manual.



For external USB connection, just plug in the USB cable to CN2.



5. For internal USB cable has been connected, power up your PC / For external USB cable connection, just plug the USB cable to the PC USB port.
6. Firmware message will be shown on the LCD.



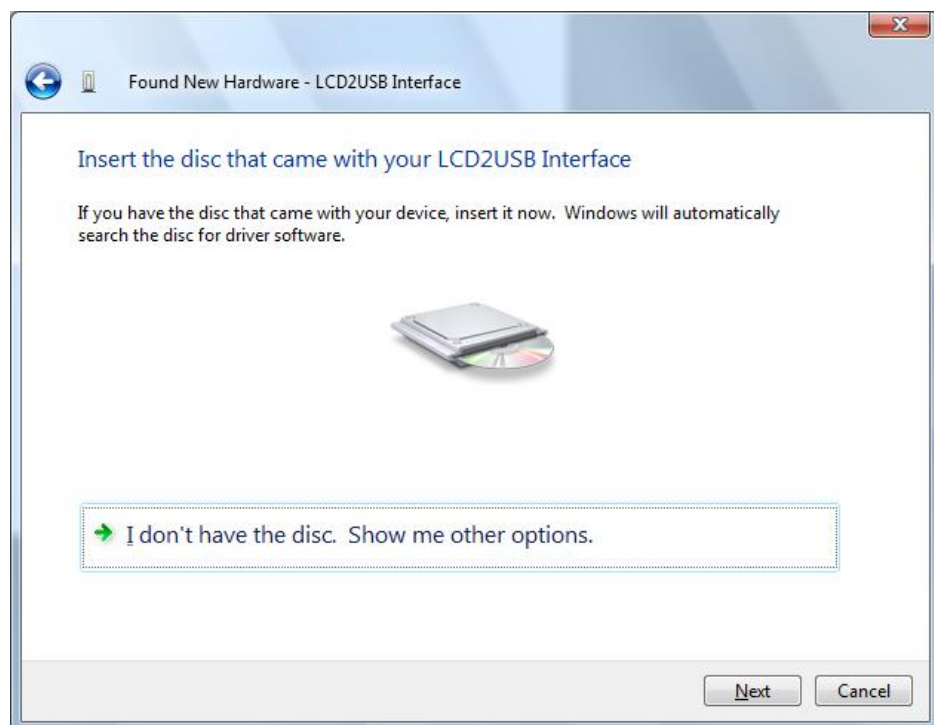
7. "Found New Hardware" wizard will be popup on screen. Choose "Locate and install driver software (recommended)"



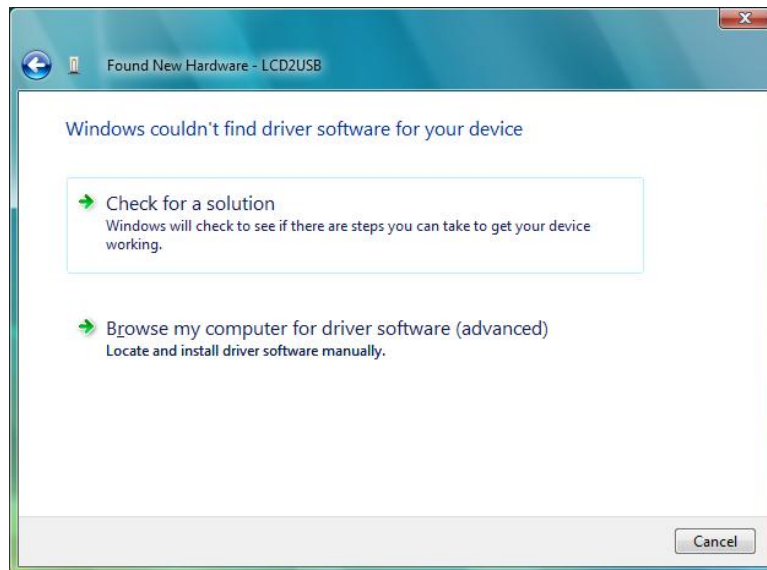
8. Choose "Don't search online".



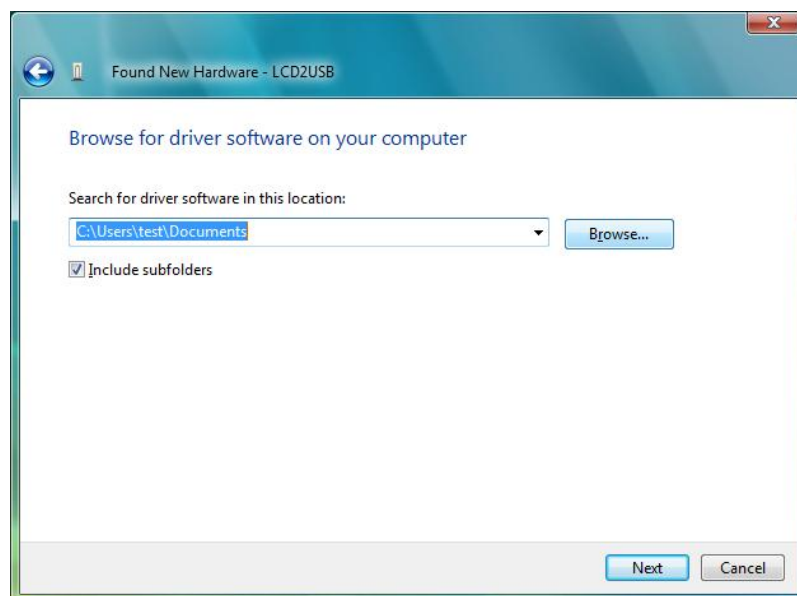
9. Choose "I don't have the disc. Show me other options".



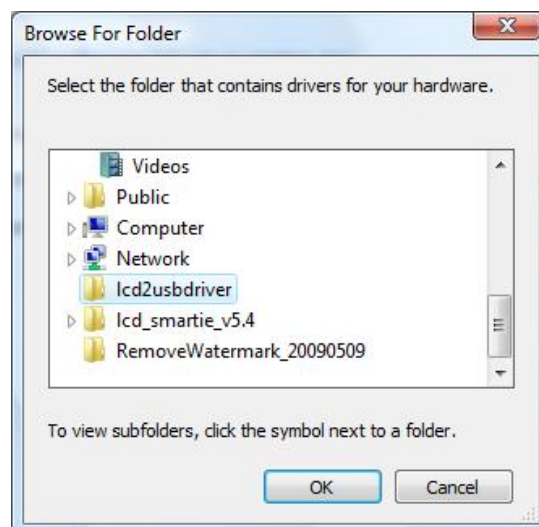
10. Click "Next".



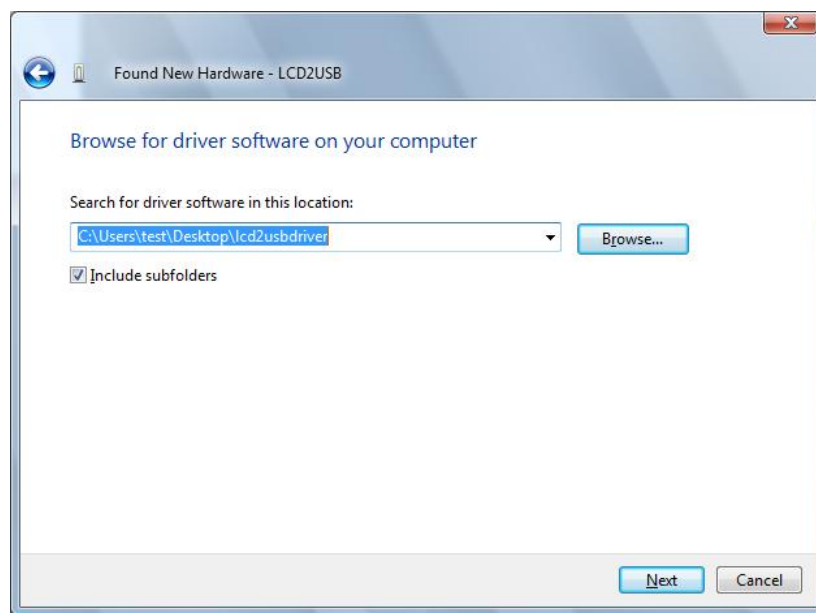
11. Choose "Browse my computer for driver software (advanced)".



12. Browse the driver from the folder "lcd2usbdriver" you located before.



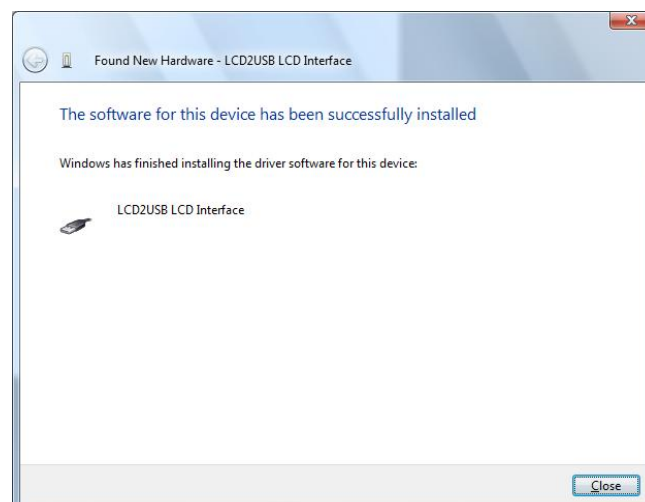
13. Click "Next".



14. "Install this driver software anyway"



15. Wait for the driver installation.



16. The driver of this device has been successfully installed and device is ready to use.

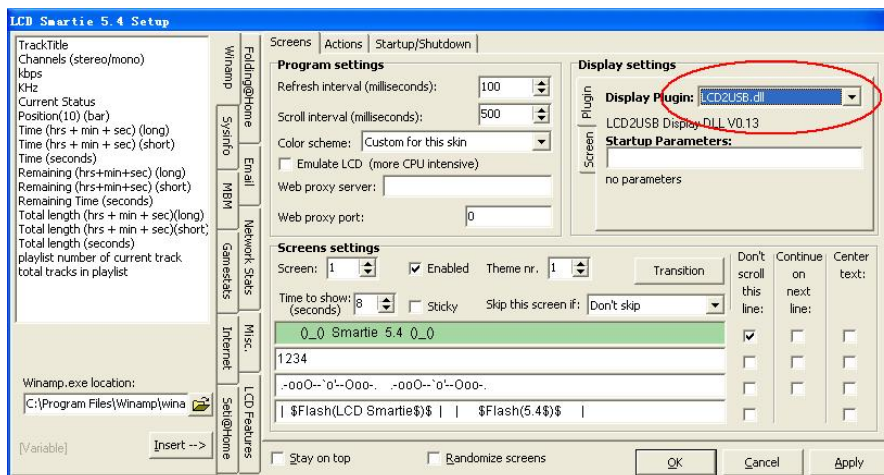
Configuration in LCD Smartie

Procedure

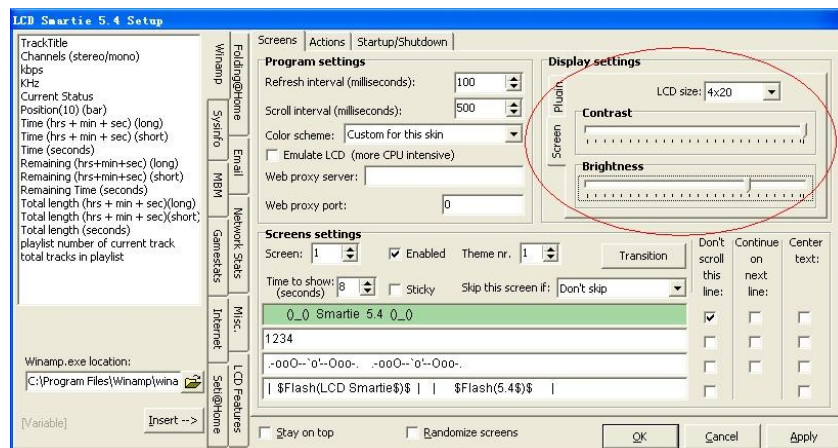
1. Copy the whole folder "lcd.smartie-v5.4 " to any folder/driver of your PC and click into the folder and run "LCDSmartie".



2. Click in the setup and make sure Display Plugin is "LCD2USB.dll".



3. Set the screen according to your LCD. LCD contrast and backlight brightness can be tune here.



3. Finished. LCD Smartie information is shown on the LCD now.

